



# SCIENCE

## Term 2 Revision on Cycles

**P5 SCIENCE**



## Booklet A: Multiple Questions

Choose the most suitable answer and write its number in the brackets.

1. The table shows the melting and boiling points of substance X.

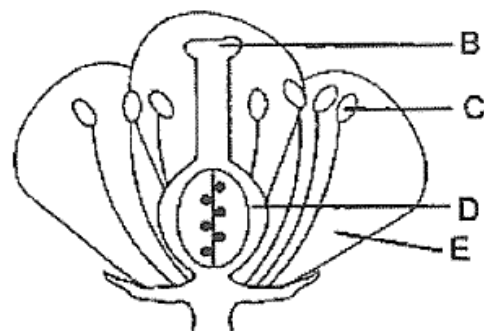
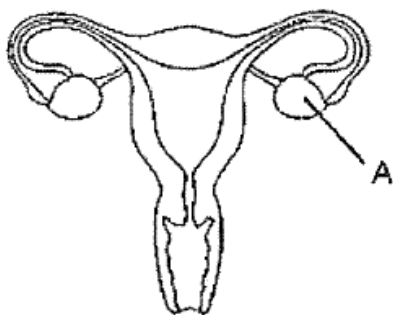
Substance	Melting point (°C)	Boiling point (°C)
X	25	125

At which state will substance X be at 10°C and 100°C respectively?

State of substance X at	
10°C	100°C
(1) Solid	Liquid
(2) Liquid	Liquid
(3) Liquid	Gas
(4) Solid	Gas

( )

2. The female reproductive system in a human and a flower are shown in the diagrams.

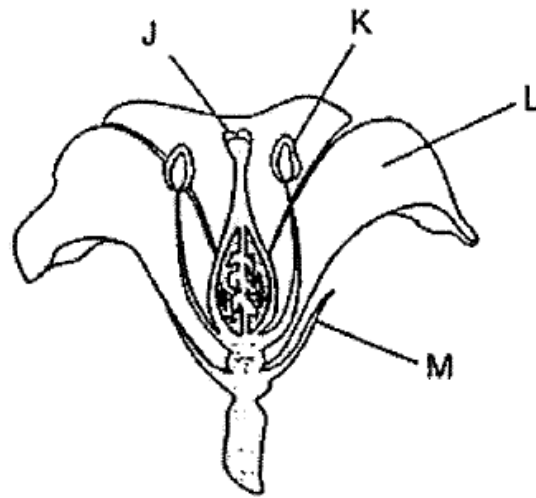


Which part of the flower has a similar function as organ A?

- (1) B  
(2) C  
(3) D  
(4) E

( )

3. Oliver performed an experiment using two flowers, A and B, from the same plant. One of the flowers is as shown.



He removed one part from flower A and one part from flower B. After some time, he recorded which flower could form a fruit.

<b>Flower</b>	A	B
<b>Presence of a fruit</b>	Yes	No

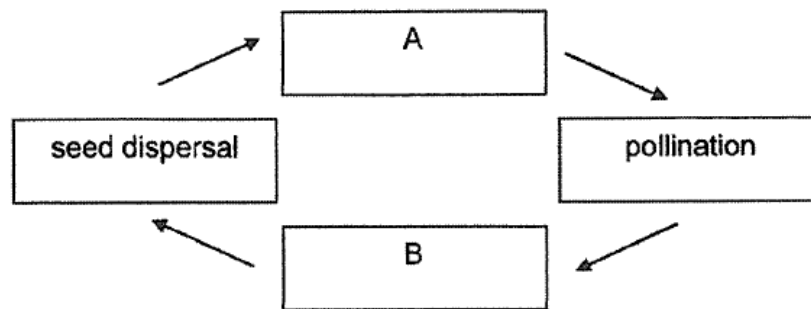
Which of the following correctly shows the part of each flower that has been removed?

<b>Part removed</b>		
	<b>Flower A</b>	<b>Flower B</b>
(1)	J	L
(2)	K	M
(3)	L	K
(4)	M	J

( )

## Booklet B: Open Ended Questions

4. The diagram below shows the stages in the life cycle of a plant.



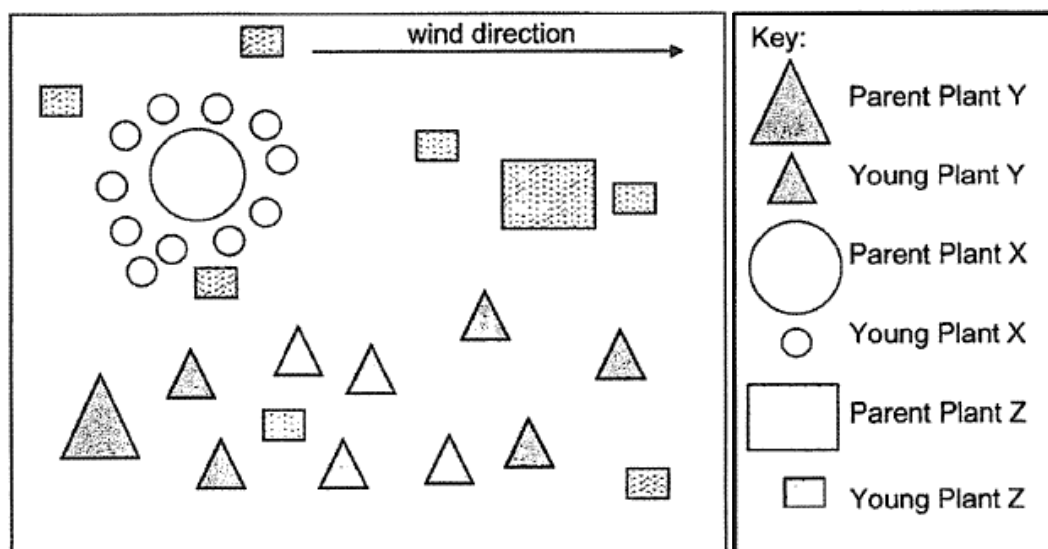
(a) What do processes A and B represent? [2]

A: \_\_\_\_\_

B: \_\_\_\_\_

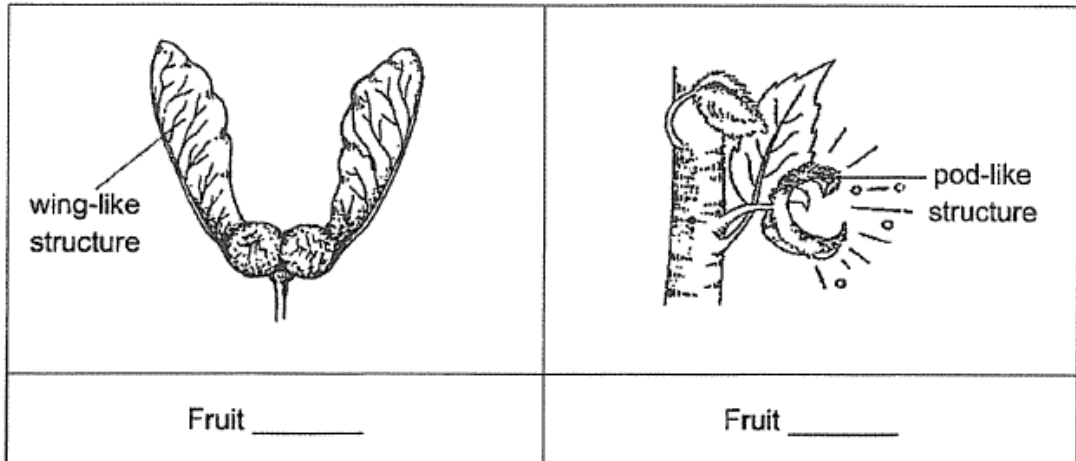
The map below shows plants X, Y and Z that were dispersed over a piece of land.

Use the map below to answer Questions 18(b) and 18(c).



(b) Based on the map, which of the following best represents the fruits of X and Y?

Label the boxes with X and Y accordingly. [1]

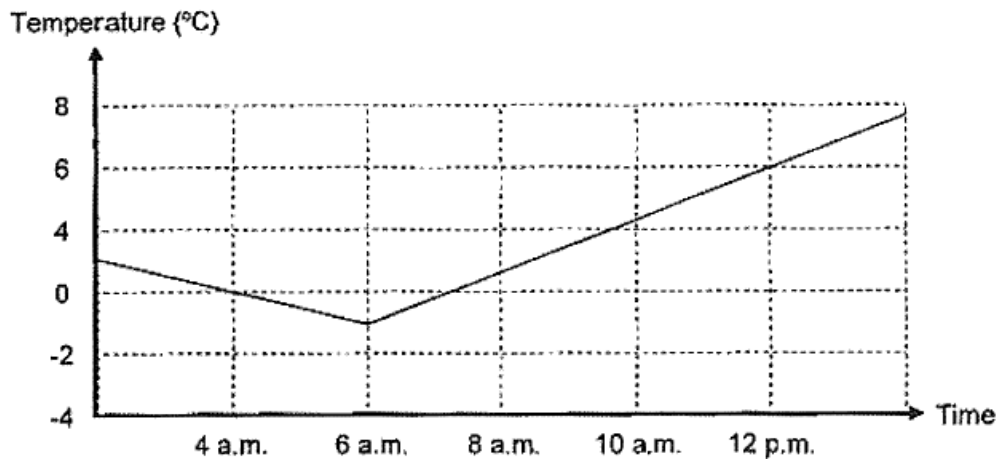


(c) State one characteristic of the fruit of plant Z that allows for it to be dispersed. [1]

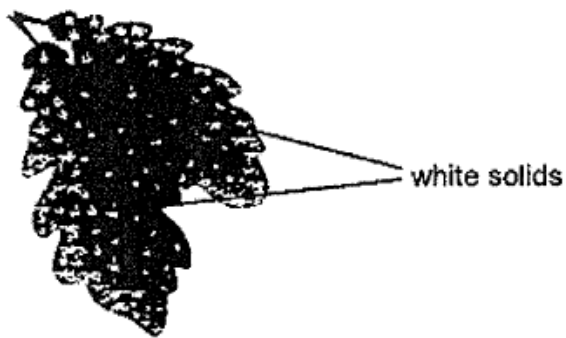
---

---

5. The graph shows the temperature of a farm across several hours.



Jane observed that some white solids could be seen on the surface of the leaves at about 6 a.m.



(a) Explain how the white solid formed. [2]

---

---

---

(b) When Jane returned to observe the leaves at 10 a.m., the white solids could no longer be seen. Explain why. [1]

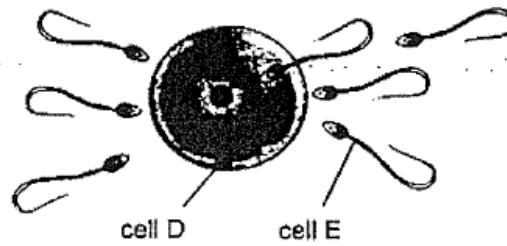
---

---

(c) From the graph, what is the temperature of the farm at 12 p.m.? [1]

---

6. The diagram below shows process C in human reproduction.



Process C

(a) Name the organs that produce cells D and E. [1]

(i) Cell D: \_\_\_\_\_

(ii) Cell E: \_\_\_\_\_

(b) Name Process C and describe the process. [1]

---

---