



**SCIENCE**

**P4 Science  
EOY Revision**

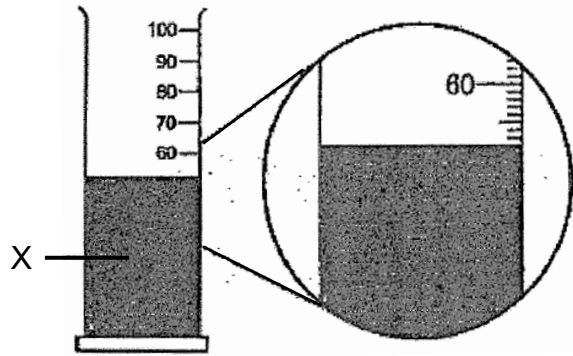
**P5 SCIENCE**



## Booklet A: Multiple Questions

Choose the most suitable answer and write its number in the brackets.

1. In the diagram below, what is the volume of liquid X?



- (1) 50 ml
- (2) 52 ml
- (3) 60 ml
- (4) 66 ml

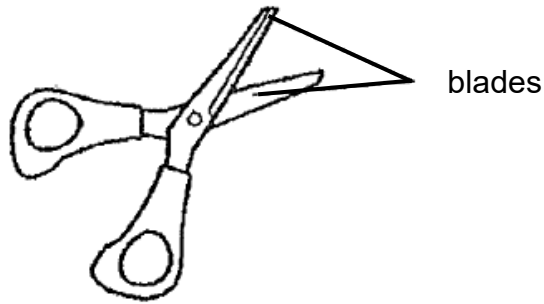
(     )

2. Which animal has a pupa as a stage in its life cycle?

- (1) Frog
- (2) Chicken
- (3) Mosquito
- (4) Grasshopper

(     )

3. The diagram shows a pair of scissors.



Metal is used to make the blades of the scissors because metal \_\_\_\_\_.

- (1) is strong
- (2) can reflect light
- (3) can bend without breaking
- (4) does not allow light to pass through

(     )

4. Which one of the following rods can be attracted by a magnet?

- A: iron rod
- B: steel rod
- C: glass rod
- D: plastic rod

- (1) A and B
- (2) B and C
- (3) A and C
- (4) B and D

(     )

## Booklet B: Open Ended Questions

5. Study the table below carefully.

	Characteristic			
	Has legs	Can swim	Able to breathe in water	Lays egg
Animal P		✓	✓	✓
Animal Q	✓	✓		✓

A tick (✓) indicates the presence of the characteristic.

**Use only the information given in the table above to answer the questions below.**

(a) State two similarities between animals P and Q. (1m)

---

---

(b) Based on the information given above, Maran concluded that animal Q is definitely an insect.

Do you agree with Maran? Explain your answer. (1m)

---

---

(c) Animal Q does not live in the water. Suggest a reason for this. (1m)

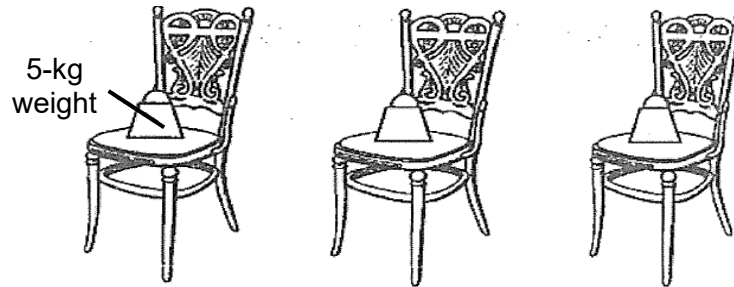
---

---



6. There were 3 chairs made of different materials. Goldilocks wanted to find out if the type of material affects the strength of the chair.

She placed some weights on them and measured the number of 5-kg weights the chairs could hold before they broke. She carried out the experiment three times for each chair.



She recorded her observations in the table below.

Material	Number of weights on the chair before it broke		
	Trial 1	Trial 2	Trial 3
A	4	5	3
B	7	9	7
C	2	1	1

- (a) Based on the above results, which material, A, B or C, is most suitable for making a bookshelf?

Explain your answer. (2m)

---

---

---

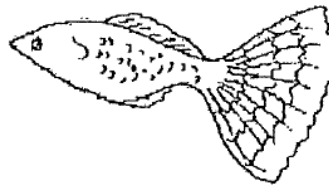
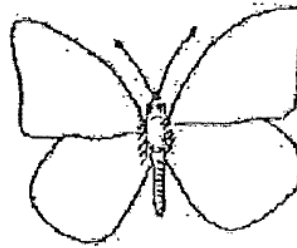
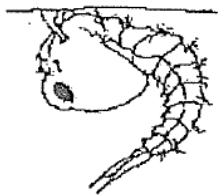
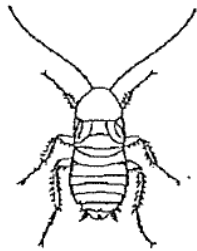
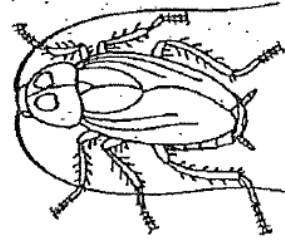
- (b) State the variable Goldilocks changed in this experiment. (1m)

---

- (c) Suggest why Goldilocks carried out the experiment thrice for each material. (1m)

---

7. The diagrams below show the young and adult of some organisms. Draw lines to match the young with the correct adult. (3m)



8. Classify the following into matter and non-matter. (3m)

sand	shadow	milk
------	--------	------

Matter	Non-matter