



SCIENCE

**P4 Science
EOY Revision**

P5 SCIENCE



Booklet A: Multiple Questions

Choose the most suitable answer and write its number in the brackets.

1. Which one of the following is **not** a source of heat?

- (1) the Sun
- (2) a lighted lamp
- (3) a lighted stove
- (4) a woollen glove

()

2. Philip used a frying pan to cook as shown below.



He is able to hold the frying pan using the plastic handle. This is because plastic is a _____.

- (1) light material
- (2) flexible material
- (3) poor conductor of heat
- (4) good conductor of heat

()



3. Roger planted a seed and watered it every day. He observed the growth of the seed and recorded the length of three different parts of the young plant: X, Y and Z, in the table below.

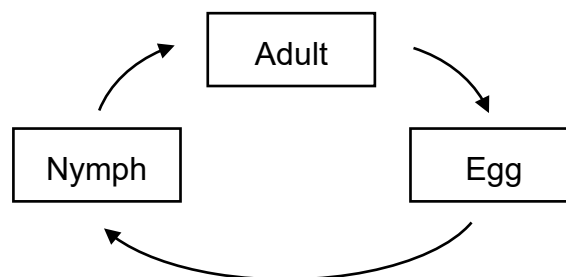
Day	Length of Part X (units)	Length of Part Y (units)	Length of Part Z (units)
3	1	0	0
6	2	0	0
9	4	3	0
12	5	4	0
18	7	7	4

Based on the table above, which of the following is correct?

	Green leaf	Root	Shoot
(1)	X	Y	Z
(2)	Y	X	Z
(3)	Z	Y	X
(4)	Z	X	Y

()

4. The diagram below shows the life cycle of an animal.



Which animal is likely to have the life cycle as shown above?

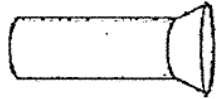
- (1) Beetle
- (2) Chicken
- (3) Butterfly
- (4) Cockroach

()



Booklet B: Open Ended Questions

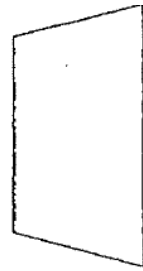
5. Peter shone a torch on the ball and a shadow is formed on the wall.



torch



ball



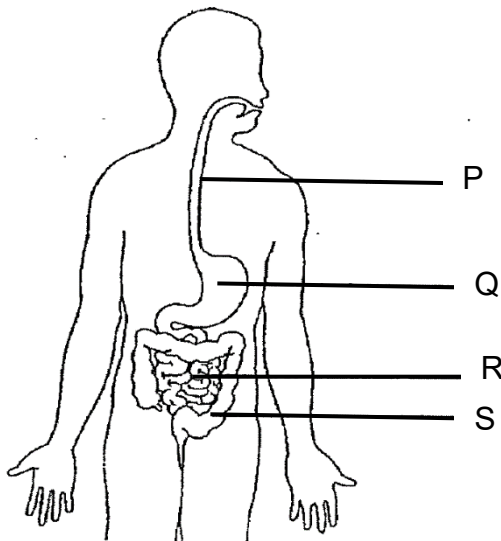
wall

(a) A shadow is formed when light is _____ by an object.
(1m)

(b) Draw the shadow of the ball that is formed on the wall. (1m)



6. The diagram below shows the human digestive system.



(a) Observe the diagram above and name the parts of the digestive system represented by letters, P and Q. (2m)

Part P: _____

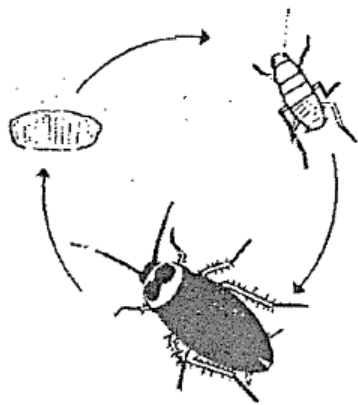
Part Q: _____

(b) What is the function of part S? (1m)

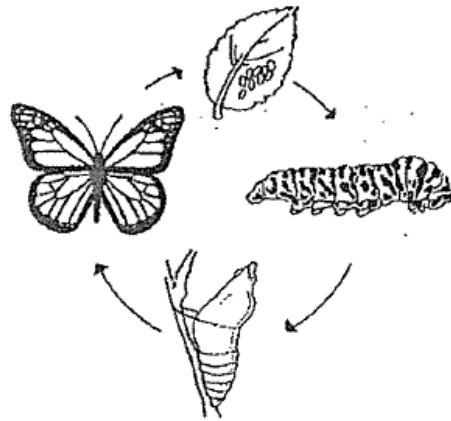
(c) In which part(s), P, Q, R and S, will digestive juices be produced? (1m)



7. The diagrams below show the life cycles of a cockroach and a butterfly.



cockroach



butterfly

(a) Based only on what can be observed in the diagrams above, list one difference between the life cycle of the cockroach and the life cycle of the butterfly. (Do not compare the size, shape and colour.) (1m)

(b) Butterflies lay many eggs on leaves at one time. Suggest one advantage of this behaviour. (1m)

8. Evelyn wanted to find out if light is needed for seeds to germinate. She has the following materials.



Plate A



Plate B



Seeds



Cotton Wool

(a) Arrange the steps in the correct order using numbers 1 to 5, in the table below to show how she should carry out the experiment. Step 3 has been given as shown. (2m)

Step	Procedures
	Wet some cotton wool and place them on plates A and B.
	Add equal amounts of water daily to the cotton wool.
3	Place the plates with cotton wool and seeds at 2 different locations.
	Put equal number of seeds on each plate A and B.
	Observe the seeds on both plates daily and record the results.

(b) Suggest 2 locations to place each of her plates for the experiment. (1m)

Location 1:

Location 2:
